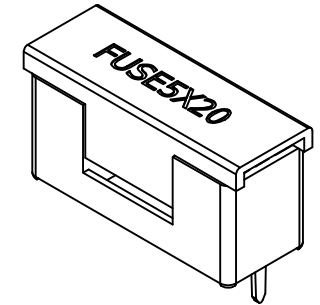
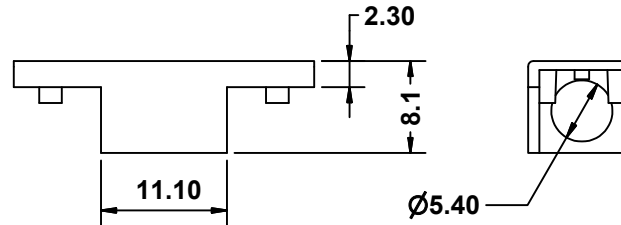
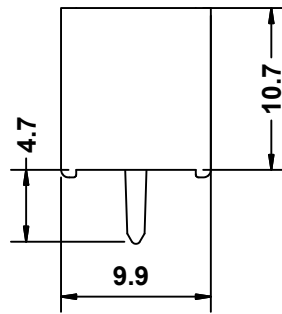
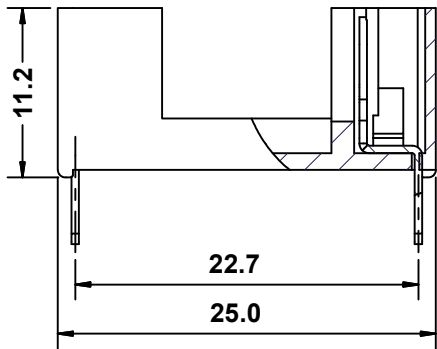
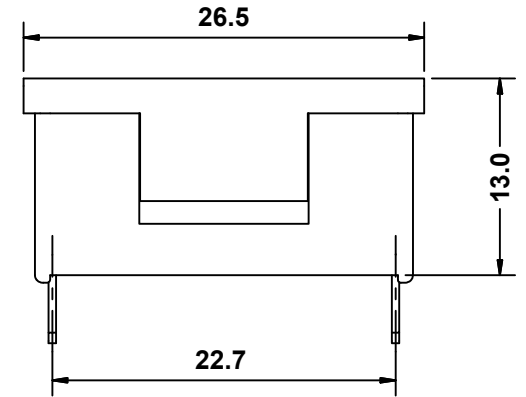
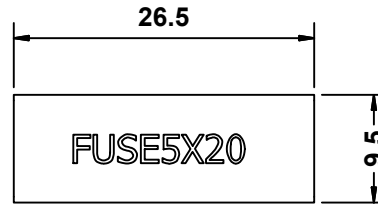
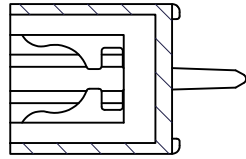
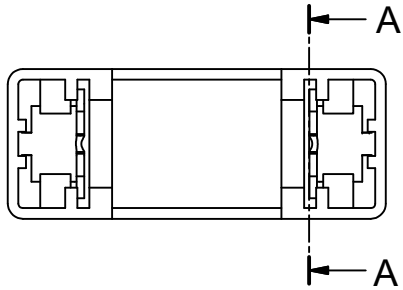


A-A SECTION



5.2x20mm FUSE BLOCK

Specifications:

Insertion & extraction force min. 1 kg

Dielectric strength min. AC500V for 60 seconds

Electrical rating:6.3A 250V



Insulation resistance at 500V DC min.100M Ohms

Temperature rise max.50°C

Max.voltage drop: 20mV

Insulating Body and Cover: Nylon

Contacts Clip/Terminals:Brass,tin plated.Thickness=0.5mm

UNLESS OTHERWISE SPECIFIED DIMENSIONS ARE IN MM TOLERANCE DECIMALS ANGULAR X± 0.5 ± 2' XX± 0.25 DO NOT SCALE DRAWING		CUSTOMER NO.	JENN FENG ELECTRIC INDUSTRIAL CO., LTD.
		DRAWN BY Tim	
 		CHECKED BY 林進有	PCB FUSE BLOCK
		APPROVED BY 楊學元	
P/N	C520500265N	DATE 2016/9/1	DRAWING NO. AA05041501
REV	B	SCALE	