

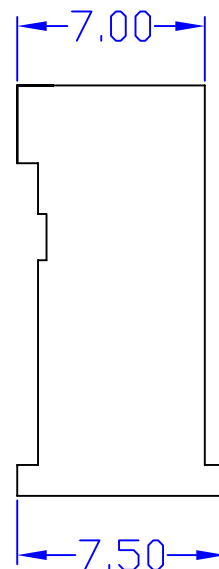
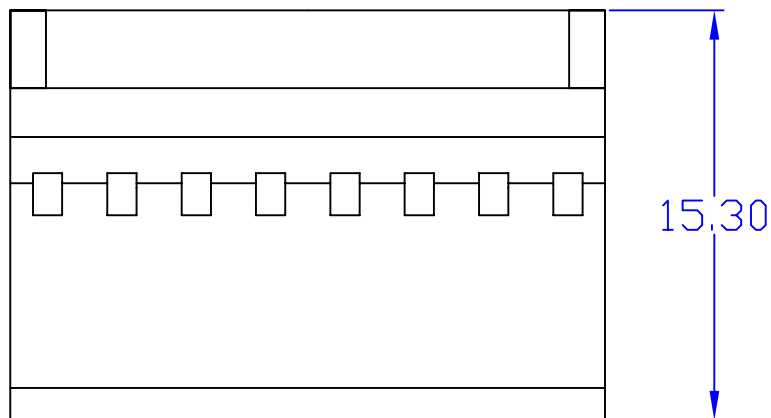
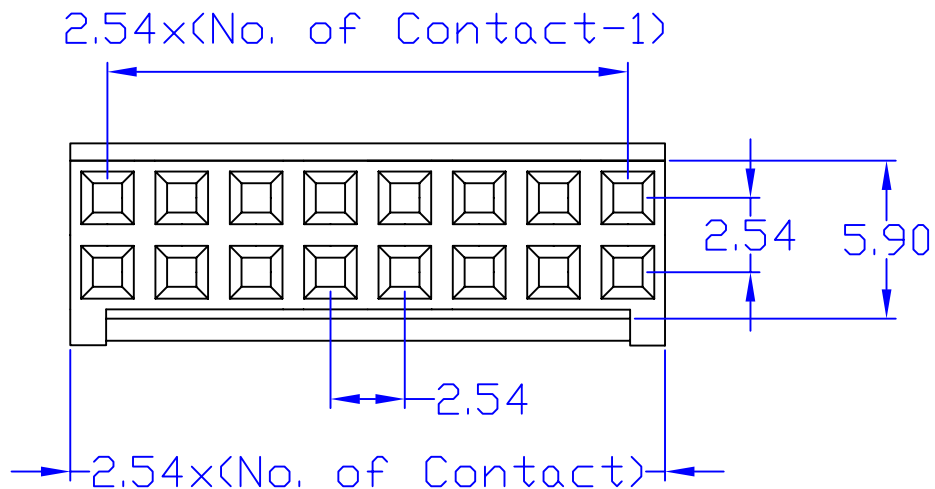
## 2548-2x\*\* Series

- \* Available in 2x3~2x20 Circuits
- \* Material: PBT UL94V-0, Color Black
- \* Accepts Conwin 2540T Terminal
- \* Mates with 2542S / 2542R Headers

### Specifications

- \* Current Rating: 3A AC, DC
- \* Voltage Rating: 250V AC, DC
- \* Temperature Range: -25°C~+85°C
- \* Insulation Resistance: 1,000MΩ min.
- \* Withstand Voltage: 1000V AC/minute

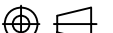
**RoHS**



CONWIN ENTERPRISES CO., LTD.

禧司康有限公司

No. 25, Lane 372, Jinmen St., Ban Chiao 22071, Taipei, Taiwan  
 TEL: 886-2-2675-3311 FAX: 886-2-2675-0501

TITLE	2.54mm Pitch Double Row Housing	APP.BY	H.H.T.-06/11/08'	TOLERANCE UNLESS OTHERWISE SPECIFIED		SIZE:	A4
PART No:	2548-2x** Series	CHK.BY	Natalia-06/11/08'	LINEAR	0.0 ±0.38	SHEET:	1/1
DRW No:	C2548H2001	DRW.BY	Natalia-06/11/08'		0.00 ±0.25	COMMENTS:	成品規格圖
PROJECT:		UNIT:	mm	SCALE	NOT TO SCALE	ANGLES	