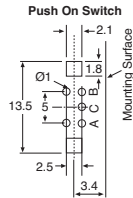
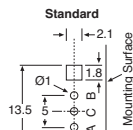
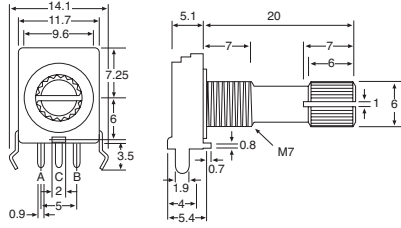
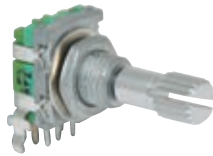


PCB Mount Rotary Encoder

Rating: 5V DC
 Max operating current: 10mA
 Insulation resistance: 300V DC 100M Ohm Min.
 Rotational life: 15,000 Cycles
 Resolution: 20 pulses/360°



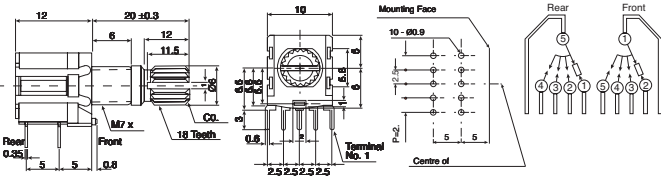
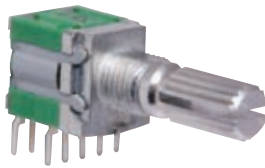
SHAFT ROTATION	SIGNAL	OUTPUT
CW	Pins A-C	OFF ON
	Pins B-C	OFF ON
CCW	Pins A-C	OFF ON
	Pins B-C	OFF ON

Price Each	RRP	10+	20+
S 3350	5.20	4.60	4.35
S 3352 With Push On Switch	5.95	5.35	4.75

Rotary Switches

PCB Mount Rotary Switch

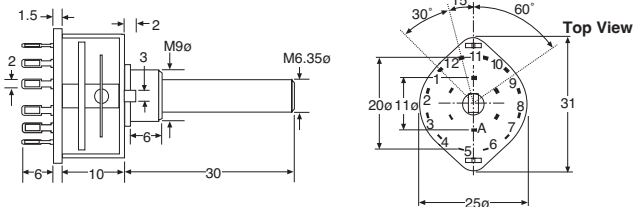
Type: 2 pole, 4 position
 Rating: 16V DC
 Max operating current: 10mA
 Contact resistance: 50mΩ max
 Insulation resistance: 300V DC 100M Ohm Min.
 Withstand voltage: 100V AC 1 minute
 Operational force: 400 ± 200gf/cm
 Resolution: 20 pulses/360°



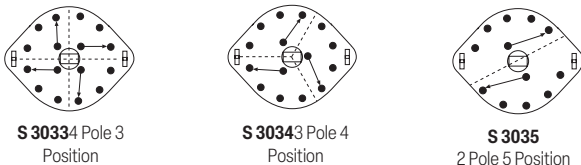
Price Each	RRP	10+	40+
S 3008	8.00	7.20	6.45

Rotary Wafer Switches

Shaft diameter: 6.35mm
 Shaft length: 30mm
 Shaft shape: Round
 Contact type: Break before make
 Contact rating: 125V AC/DC @350mA
 Termination: Solder tag terminals



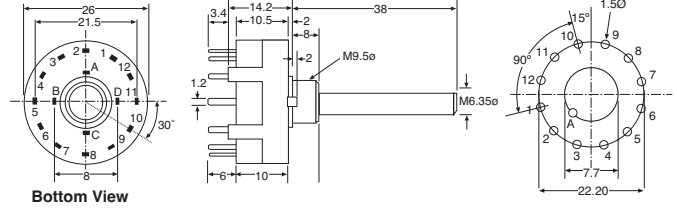
Switching Diagrams (top view)



Price Each	RRP	10+	40+
ALL	4.00	3.55	3.20

PCB Mount Rotary Switches

Shaft diameter: 6.35mm
 Shaft length: 30mm
 Shaft shape: D shaft
 Contact type: Break before make
 Contact rating: 150mA @ 250V AC
 Contact material: Silver plated
 Max. working voltage: 300V
 Termination: 1.2 mm PCB Pins



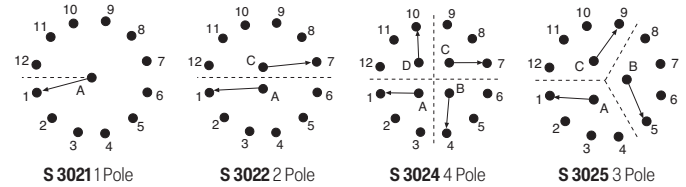
User Selectable Configuration

Each switch can be configured to the required number of positions with the special washer provided. For example, a 1 pole, 12 position switch can be configured anywhere from 2 to 12 positions.

User Selection Guide

Part No.	From	To
S 3021	1 pole 2 pos	1 pole 12 pos
S 3022	2 pole 2 pos	2 pole 6 pos
S 3024	4 pole 2 pos	4 pole 3 pos
S 3025	3 pole 2 pos	3 pole 4 pos

Switching Diagrams (top view)



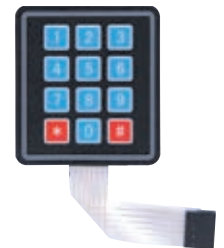
Note, these rotary switches are not compatible with H 6020, H 6022, H 6024, H 6028 and H 6030 knobs.

Price Each	RRP	10+	40+
ALL	4.55	4.15	3.70

Keypad Switches

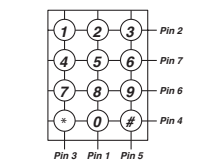
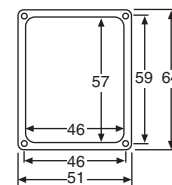
3x4 Membrane Numeric Keypad

Ideal for access control projects, these adhesive backed membrane keypads can be interfaced to an Arduino digital inputs. 85mm flexible flat connection lead.



Price Each	RRP	2+	4+
Z 6341 69W x 77Hmm	8.95	8.05	7.15

Numeric Keypad



3 x 4 way matrix.

Pinouts viewed from front

Contacts: Conductive rubber
 Rating: 20mA @ 24V DC
 Contact resistance: 200Ω Max
 Electrical life: 10 million cycles per key

Price Each	RRP	4+	10+
S 5381	10.50	9.65	8.95