

Ivent Solutions Market Trend Update

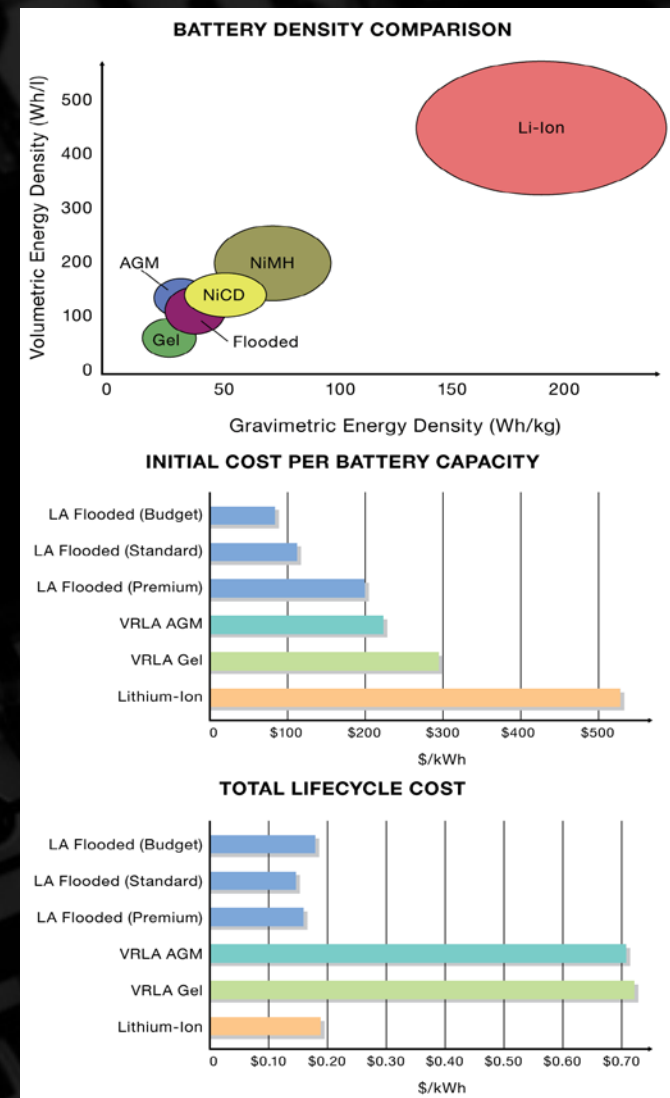
May 2019

Transitioning SLA to Lithium Battery Technology

Applications with high voltage and capacity requirements are starting to adopt Lithium-ion (Li-ion) technology because of its many advantages, especially the high energy density, small size and low weight that this technology provides. Historically, Sealed Lead Acid (SLA) batteries have had a few superior technical traits, in addition to their extremely low cost, that have kept them leading the majority of the overall battery market. However, recent innovations in Li-ion chemistry has made it more competitive in markets that are weight sensitive (shipping costs) and applications which are inconvenienced by SLA's that require frequent maintenance.

Li-ion battery systems are a good option when requirements specify lower weight, higher energy density or aggregate voltage, or a greater number of duty cycles. The accompanying graph illustrates that Li-ion technology offers a pronounced energy density advantage by both volume and weight. It's also important to note the size of the Li-ion bubble; it represents the many flavors of Li-ion available on the market. The specific characteristics of each Li-ion cell chemistry, in terms of voltage, cycles, load current, energy density, charge time, and discharge rates, must be understood in order to specify a cell that is appropriate for an application. Conventional Li-ion chemistry, designed for portable applications like lap-tops and cell phones, is designed to offer the highest energy density by size and weight. Typically, these applications do not have high current requirements and are relatively price sensitive, so conventional Co-based Li-ion cells are appropriate for applications that need to be smaller and lighter.

The three primary functional components of a Li-ion battery are the anode, cathode, and electrolyte, for which a variety of materials may be used. Depending on the choice of material for the anode, cathode, and electrolyte, the voltage, capacity, life, and safety of a Li-ion battery can change dramatically. The cathode is generally one of three materials: a layered oxide (such as cobalt oxide), one based on a polyanion (such as iron phosphate), or a spinel (such as manganese). The electrochemical reaction produces about three and a half volts depending on the chemistry and brand, so four cells in series can produce a range of nominal voltages from 12.8 to 14.8. Battery packs made with Li-ion are not a simple configuration of cells. They are carefully engineered products with many safety features. The main components of a battery pack include; the cells, which are the primary energy source, the printed circuit board, which provides the intelligence of the system, the plastic enclosure, external contacts, and insulation.



Ivent Solutions Market Trend Update

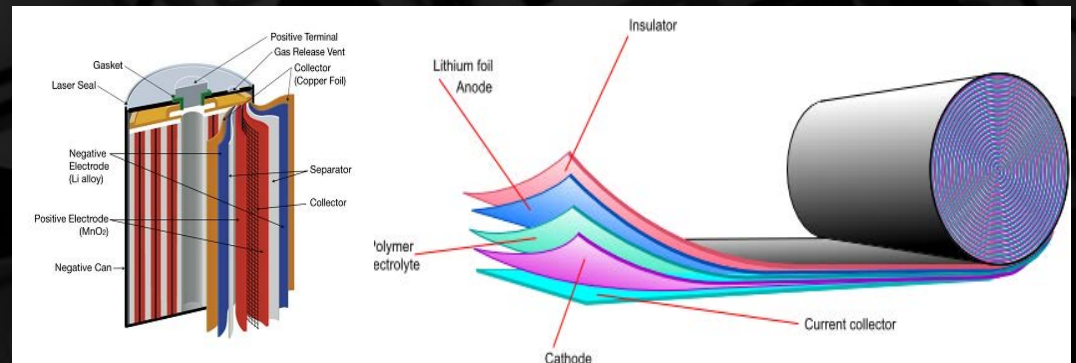
May 2019

SLA batteries are stressed the most if discharged at a steady load to the end-of-discharge point. An intermittent load allows a level of recovery of the very chemical reaction that produces the electrical energy. The advantage is a simple voltage measurement can be used for fuel gauging. Traditional fuel gauges for Li-ion either monitored the voltage or the capacity, and the accuracy was quite limited. This is due to that flat discharge curve we saw earlier. New gas gauges monitor the number of coulombs being transferred and opportunistically calibrate with the open circuit voltage of the Li-ion pack. These features allow the end-user to intelligently manage device use and avoid unexpected failures or shutdowns.

Newer Li-ion chemistries are optimized around the power tool and electric vehicle markets. These Fe-phosphate based cells have remarkable cycle life and current delivery capability, but their volumetric energy density is less and upfront cost is greater. The benefits of new high rate Fe-phosphate cell chemistries include; increased safety, low impedance and high discharge rates and a voltage that matches well with SLA at 12 and 24V increments. These design features allow use of a conventional SLA charger. Fe-phosphate chemistry also yields the longest cycle life, which can be as many as thousands of cycles and several years of operation.

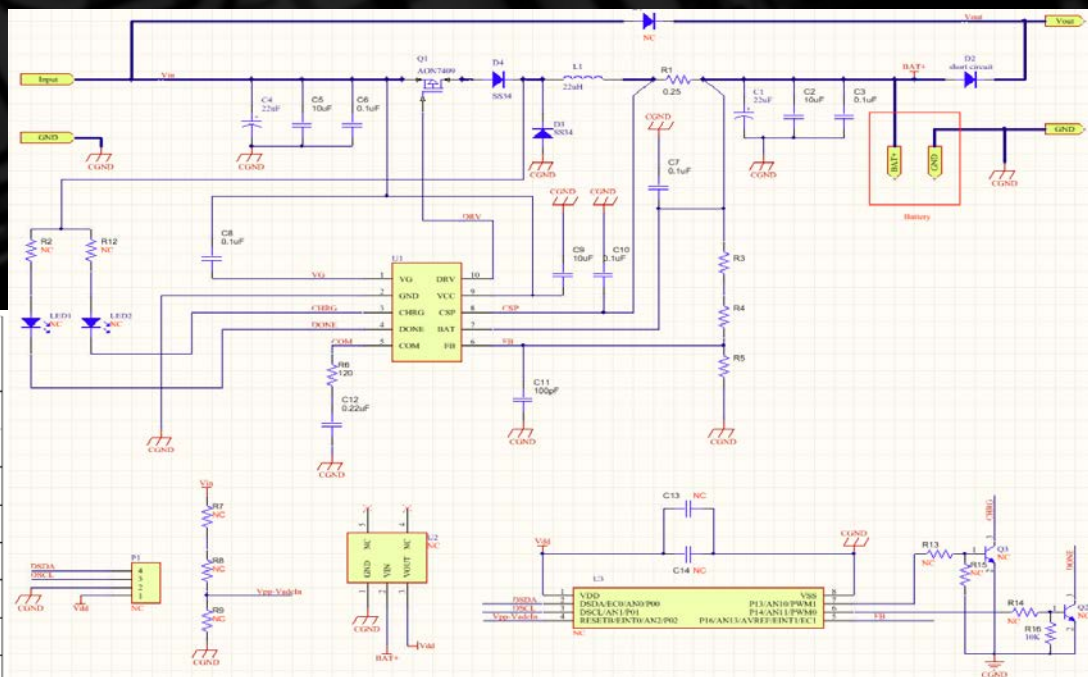
There are several charging methodologies for SLA batteries. Due to the versatility of the SLA battery chemistry, charging electronics are simple and cheap, and numerous options exist. For Li-ion batteries, constant current - constant voltage, or CC/CV, is the only universally accepted Li-ion charging method. A constant current equal to or lower than the maximum charge rate is applied to the battery until the maximum charge voltage is reached. A Li-ion battery is fully charged when the maximum charging voltage has been reached and the falling value of the charge current is below a certain fraction - usually 1/30 to 1/10 - of the battery's maximum charge rate. When a device manufacturer considers migrating from SLA to Li-ion battery, they have several options for placement of charge control electronics. The simplest option is to totally replace the SLA charge electronics with Li-ion charge electronics within the charging bay. The new Li-ion charger is backwards compatible with the SLA batteries, but the old SLA charger is not forward compatible with the new Li-ion battery. Lithium iron phosphate provides a nice compromise for migration from SLA, as it will operate with most of the SLA charging methods.

Imagine an SLA battery for a product with a 10 year lifetime. Over this lifetime the SLA would need to be replaced 5 times. A cobalt oxide pack with similar capacity would cost roughly twice as much but its cycle life is almost twice as much also. The upfront cost would be more, but over the lifetime of the product the total cost may be lower. With an iron phosphate Li-ion pack would likely be about 3 to 4 times the upfront cost, but the cycle life is so long that the solution will almost certainly have a lower cost over the life of the product. The Fe-phosphate cells are more amenable to direct use of an SLA charger and are appropriate for replacement of SLA when total cost of ownership and weight reduction are the primary objectives.

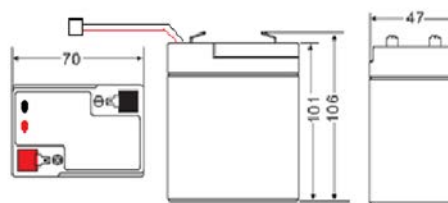


An excellent example of a SLA battery pack transitioning to Li-ion technology is the new 7.27V 10.5Ah battery from Ivent and C-Tech. This battery has 76.335Wh of energy storage in precisely the same plastic housing as a standard 6V 4Ah SLA AGM battery (representing over 300% more performance). This particular battery has built in PCB and also solar battery charging circuitry. There are standard 4.8mm QC terminals for power connection, and a separate 2-pin charging connector. The battery enclosure is a green colour to clearly differentiate the product from it's very similar looking SLA cousin. Please contact Ivent for further details on this or any other Lithium battery pack configuration.

Index. 序号	Items 项目	Parameter 参数
1	Charging Method 充电方式	CC-CV 恒流恒压
2	Charging Voltage 充电电压	9-21V
3	Over Charging Protect 过充保护	4.250±0.025V
4	Standard Charging Current 标准充电电流	0.5A
5	Max. Charging Current 最大充电电流	0.5A
6	Cut-off Charging Current 充电结束电流	10mA
7	Standard Discharging Current 标准放电电流	2100mA (0.2C)
8	Max. Continue Discharging Current 最大持续放电电流	10A
9	Max Peak Discharging Current 最大瞬间电流	18A (5S)
10	Discharging cut-off Voltage 放电结束电压	5.0V
11	Over Discharging Protect 过放保护	2.50±0.08V
12	Over Charge Current 过充电流	25±5A
13	Over Discharge Current 过放电流	25±5A
14	Internal Resistance 内阻	<120mOhm
15	Standard Charge Temperature 标准充电工作温度	0~45℃
16	Standard Discharge Temperature 标准放电工作温度	-20~60℃
17	Storage Humidity 存储湿度	65%RH not condensed (无凝结)
18	Storage Temperature 存储温度	-20~60℃
19	Weight 重量	About - g



Schematic circuit diagram



Length	70±1mm (2.75 inches)
Width	47±1mm (1.85 inches)
Height	101±1mm (3.97 inches)
Total Height	106±1mm (4.17 inches)



Ivent Solutions Market Trend Update

May 2019

NZD versus AUD - AU\$0.945 vs NZ\$1.00



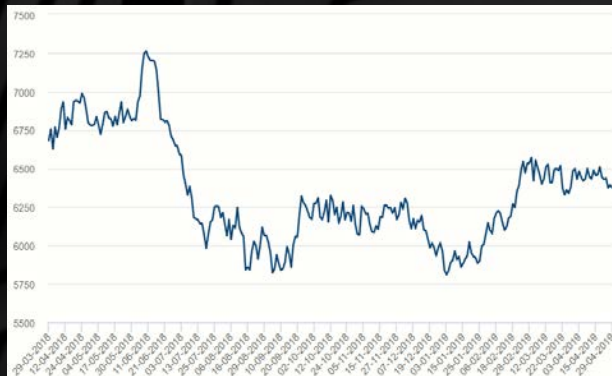
NZD versus USD - US\$0.665 vs NZ\$1.00



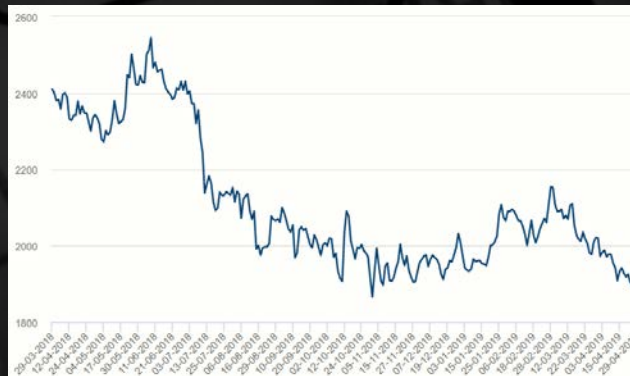
NZD versus EUR - EU\$0.595 vs. NZ\$1.00



Copper - USD6400 / tonne



Lead - USD1950 / tonne



Nickel - USD12500 / tonne

